

## MORE FEATURES FOR EVEN MORE VALUE.

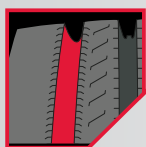
We've made it our goal to ensure that we're always offering strong, reliable performing products that serve as an exceptional value for fleets as well as owner/operators. The RY617™ has all the traditional Yokohama qualities that savvy buyers have come to rely upon, along with the latest features that deliver long, even wear, enhanced wet traction and durability.

### OPTIMIZED TREAD DESIGN FOR LONG, EVEN WEAR



#### 18/32" Tread Depth

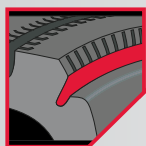
Delivers extended removal mileage.



#### Contoured Designed Groove Walls

Provide added rib stiffness that combat uneven wear.

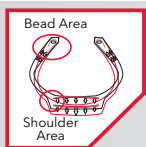
### REDUCED STRAIN AND CONTROLLED CASING GROWTH



#### Stress Wear Control Groove (SCG)

Reduces contact pressure at the tread edge, providing increased resistance to shoulder step ensuring longer wear.

### CONFIDENT HANDLING WITH ADVANCED PROTECTION



#### STEM-2 Technology (StrainEnergy Minimization)

Extends the life of the casing by directing destructive stress forces away from critical bead and shoulder areas minimizing flex in the casing.



#### Five-Rib Tread Design

Includes over 6,000 sipes that provide excellent water evacuation and uniform wear. Special stress control sipes are especially effective in combating river wear.



#### Stone Ejectors

Deep in the tread grooves keep stones from embedding into the tire to minimize drill damage for increased durability and casing life.

### IT'S IN OUR DNA.



Our innovative business philosophy, SmartSolution®, is our commitment to meeting the most essential demands of today's fleets: Longevity, Efficiency, Availability and Dependability.



STEM-2 technology extends the life of the casing by redirecting normally destructive stress forces.

### SmartWay® Verified

Our RY617 is one of many Yokohama tires designed to meet SmartWay's stringent low rolling resistance criteria.



## SIZES AND SPECIFICATIONS

TIRE SIZE	PART NUMBER	PLY RATING (L.R.)	TIRE WEIGHT (LBS)	RIM SIZE (INCH)		INFLATED DIMENSIONS		TREAD DEPTH (1/32")	LOADED DIMENSIONS		RPM	MAX LOAD CAPACITY AT COLD INFLATION PRESSURE				MAX SPEED (MPH)
				MEASURE	ALT	OVERALL WIDTH (INCH)	OVERALL DIAMETER (INCH)		SECTION WIDTH (INCH)	STATIC RADIUS (INCH)		LB/PSI SINGLE	LB/PSI DUAL	KG/KPA SINGLE	KG/KPA DUAL	
295/75R22.5	61701	14G	108.9	9.00	8.25	10.9	40.1	18	12.0	18.7	520	6175@110	5675@110	2800@760	2575@760	75
295/75R22.5	61721	16H	111.1	9.00	8.25	10.9	40.1	18	12.0	18.7	520	6610@120	6005@120	3000@830	2725@830	75
11R22.5	61702	14G	114.1	8.25	7.50	11.1	41.3	18	12.0	19.5	502	6175@105	5840@105	2800@720	2650@720	75
11R22.5	61722	16H	116.6	8.25	7.50	11.1	41.3	18	12.0	19.5	502	6610@120	6005@120	3000@830	2725@830	75
285/75R24.5	61703	14G	112.1	8.25	NONE	10.8	41.3	18	11.8	19.8	499	6175@110	5675@110	2800@760	2575@760	75
11R24.5	61704	14G	122.3	8.25	7.50	11.1	43.3	18	12.0	20.2	481	6610@105	6005@105	3000@720	2725@720	75
11R24.5	61724	16H	124.9	8.25	7.50	11.1	43.3	18	12.0	20.2	481	7160@120	6610@120	3250@830	3000@830	75

Yokohama tires are subject to an ongoing development process. Yokohama Tire Corporation reserves the right to change product specifications at any time without notice or obligation. Not all models and sizes available in all locations.

## THE YOKOHAMA DIFFERENCE

When you do business with us, you get more than just a world-class tire engineered by some of the industry's best. You also get a partner, committed to delivering efficient products and solutions to help your business run more smoothly and more profitably. Our industry-leading support network truly makes Yokohama the SmartSolution.



### SMARTSOLUTION CERTIFIED PROGRAM

Each of the dealers that make up our expansive nationwide service network is selected and certified to ensure they're ready to provide the solutions you need, fast.



### YOKOHAMA EMERGENCY SERVICE (YES)

Offering nationwide emergency service we're focused on keeping your cargo on the move—24/7/365.



### YOKOHAMA IS A SMARTWAY TRANSPORT PARTNER

Working with the SmartWay program we're committed to accelerating the availability, adoption and market penetration of advanced fuel efficient technologies and operational practices in the freight supply chain helping you save fuel, lower costs and reduce adverse environmental impact.

**Yokohama Tire Corporation** | 800.423.4544 | yokohamatruck.com

Commercial Customer Service: ext. 2889

Credit Department: ext. 3977

Consumer Affairs: ext. 2880

Commercial Customer Service Dealer Order Fax: 800.455.9656